



225 Ledwith Drive, Milton, Ontario L9T 5X2

Property Information

- ▶ **Property Type:** Bungalow
- ▶ **Property Style:** 1.5 Storey
- ▶ **Beds:** 2+1
- ▶ **Baths:** 3.5
- ▶ **Taxes:** \$4,314 / 2024
- ▶ **MLS@:** Yes



Matthew Clapperton
Sales Representative
905-878-8101

Direct Cell Number:
416-949-7581

matthewclapperton@royalpage.ca
www.sellingmilton.ca



Sandy Del Papa
Sales Representative
905-878-8101

Direct Cell Number:
905-876-5546

sandydelpapa@royalpage.ca
www.sellingmilton.ca

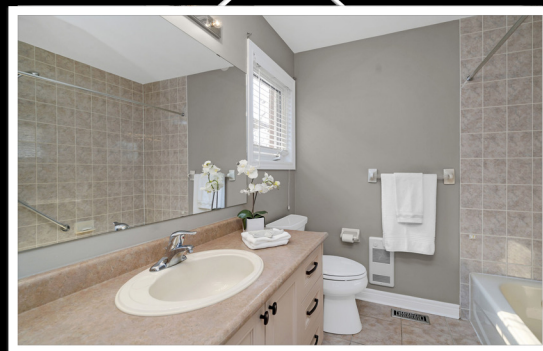
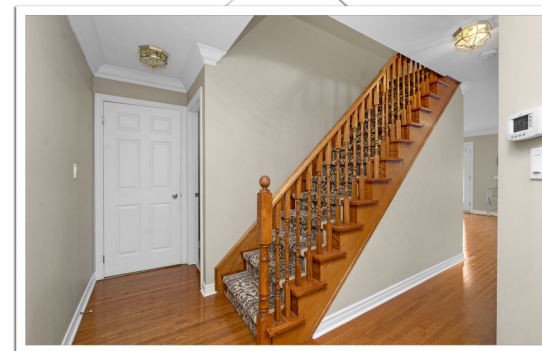
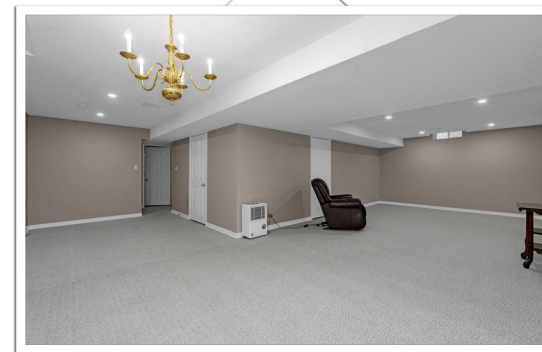
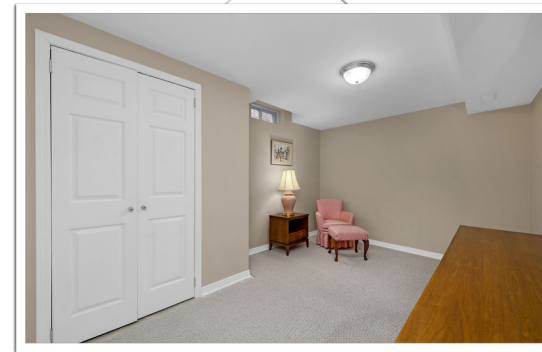
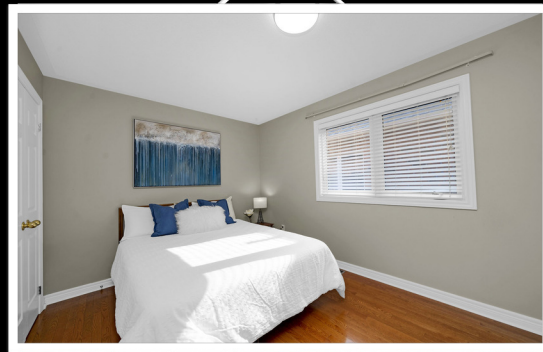


Royal LePage Meadowtowne Realty,
Brokerage Independently Owned and
Operated Brokerage
475 Main St. E.
Milton, L9T 1R1

View virtual tour at visual4sale.com Enter **V4S# 344747**

Property Description

2+1 bedroom bungalow with a 2 car garage offers comfort and convenience for discerning homeowners. The updated kitchen with white cabinets, quartz countertops, an island is perfect for culinary enthusiasts. Relax by the gas fireplace in the living room with oak hardwood floors. Retreat to the main floor primary bedroom featuring a full ensuite bath. The finished basement provides a 3rd bedroom, recreation room and bath. With its spacious layout and versatile loft space, this home offers ample room for you and your guests. Outside, unwind on the spacious front porch or entertain guests on the deck overlooking the walking path. Enjoy the convenience of walking to Milton Mall and easy access to transit.



Property Features

- ▶ 2 1 Bedroom Bungalow
- ▶ 3 1 Bathrooms
- ▶ Updated Kitchen
- ▶ Hardwood Floors
- ▶ Walking Path Behind Home
- ▶ Central Vacuum
- ▶ Crown Moulding
- ▶ Walk/Bike Path Behind Home
- ▶ Walk To Milton Mall
- ▶ Public Transit Nearby

