



\$1,849,900



1088 Balsam Lane, Inverary, Ontario K0H 1X0



Property Information

- **Property Type:** Residential
- **Property Style:** 1 Storey
- **Beds:** 3
- **Baths:** 2.5
- **Taxes:** \$7,995.54 / 2024
- **Sq. Footage:** 2253 ft
- **Lot Size:** 167.29 ft X 412 ft
- **MLS®:** 40603235

Linda Brent
Sales Representative
Direct: 613-328-1299
lindabrent@royallepage.ca



ROYAL LEPAGE
ProAlliance Realty, Brokerage
INDEPENDENTLY OWNED AND OPERATED
Royal LePage ProAlliance Realty
Independently Owned and Operated
80 Queen Street
Kingston, Ontario, K7K 6W7

Office: 613-544-4141

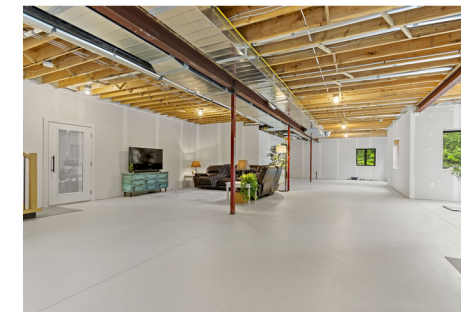
www.WelcomeHomeKingston.com

MLS All information regarding this property, either expressed or implied, is from sources deemed reliable and assumed to be correct. No warranty thereon and same is submitted to be possible errors and omissions.



Property Description

This stunning custom-built executive bungalow provides wow-factor. High-end materials, elegant finishes, and thoughtful design situated on a 2-acre lot with deeded access and dock slip on Loughborough Lake. The main floor features 3 beds and 2.5 baths, including a large primary bedroom ensuite with heated floors and a walk-in closet. Kitchen boasts a large island with granite countertops and a butler's pantry. The open concept living and dining area has patio doors to a large covered deck overlooking the forest. Cathedral ceilings, a large stone fireplace, and custom white oak hardwood flooring throughout. Lower level, with 9.5 ft ceilings and bathroom rough-in, offers great potential for additional living space.



Property Features

- Large custom built executive bungalow
- 4587 sqft above grade living space
- Deed access to waterfront and dock
- Large granite kitchen island
- So many great features
- 2 triple car garages
- 2 acres
- Open concept kitchen, livrm, dinrm
- Primary bath with heated floors
- 9.5" ceilings in the walkout basemen

