

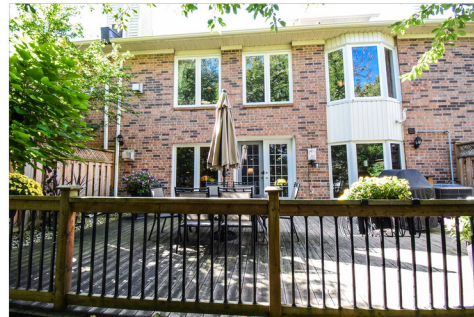


141 Welland Vale Road Unit 24, St. Catharines  
Ontario L2S 3S7



\$829,500

## Property Information



- **Property Type:** Condominium
- **Property Style:** Apartment
- **Beds:** 3

- **Baths:** 3.5
- **Taxes:** \$5,185.35 / 2024
- **Sq. Footage:** 2619 ft

- **Condo Fee:** \$655 /
- **MLS®:** X10884906



**TERRY COX**  
Sales Representative  
905-931-1384

**Direct Cell Number:**  
905-931-1384

TERRYCOX@ROYALLEPAGE.CA  
www.terryandrose.com



**ROSE DORIO**  
Sales Representative  
905-931-1040

**Direct Cell Number:**  
905-931-1040

rosedorio@royalpage.ca  
www.terryandrose.com



**Royal LePage NRC Real Estate Centre  
Brokerage**  
33 Maywood Ave  
St. Catharines, L2R 1C5



All information regarding this property, either expressed or implied, is from sources deemed reliable and assumed to be correct. No Warranty thereof and same is submitted to possible errors and omissions.

View virtual tour at [visual4sale.com](http://visual4sale.com) Enter V4S# 351232



# Property Description

"beautiful & well cared for 2 storey condo home w/ private treed back offering over 2600 sq ft of living area 2+1 bedroom 3.5 baths, 1.5 car garage, updated kitchen 2 gas fireplaces, fully finished lower lever with french patio doors leading to 24 x 15.6 private deck. in highly sought after high pointe location in grapeview area is a must see and wont disappoint"



## Property Features

- Spacious 2 storey condominium
- 2 1 Bedrooms
- 5pc & 4pc & 3pc ensuites
- Basement walk out to large deck
- Overlooking private treed lot
- Over 2600 sq ft of living area
- 3.5 Baths
- 2 gas fireplaces
- Landscaped & inground pool
- Close to 12 mile crk, trails & shopp